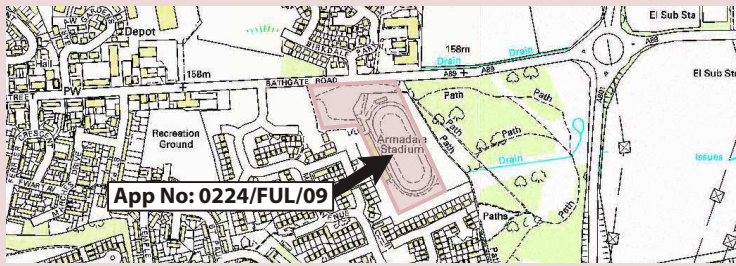


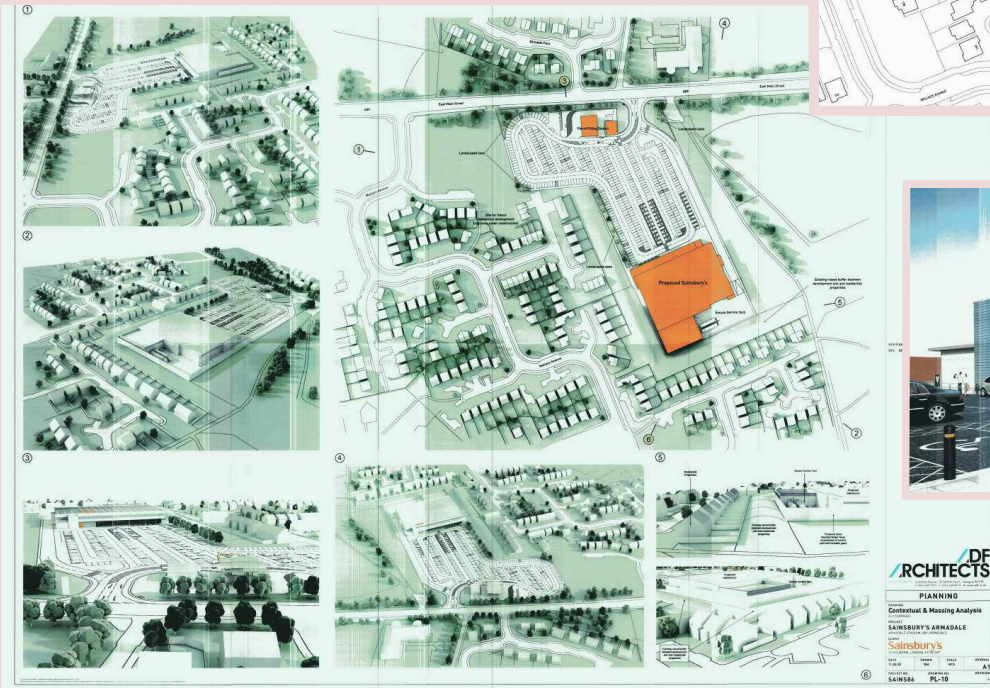
Armadale shopping proposals



0224/FUL/09 Erection of a 6170 sqm (gross floor area) supermarket with petrol station and associated car parking and landscaping at Armadale Stadium, Bathgate Road, Armadale.

Applicant: Sainsbury's Supermarkets

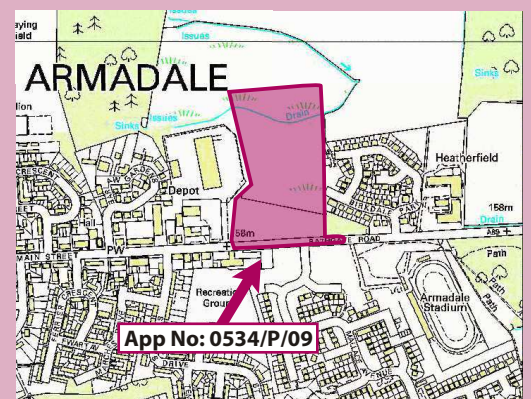
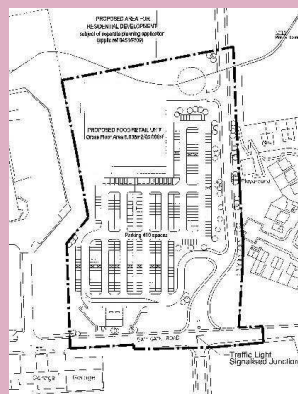
Agent: Turley Associates



0534/P/09

Outline planning permission for a 6038 sqm gross (3716 sqm net) supermarket with petrol filling station and associated car parking and landscaping at Colinshiel Farm, Bathgate Road, Armadale

Applicant: Dundas Estates & Development Co. Ltd.



West Lothian Council delivers

westlothian.gov.uk

